



# Theme1 with Favorites

Copyright 2015, HelpEssentials. All rights reserved.

No part of this document may be reproduced, transmitted in any form or by any means without the prior written permission of HelpEssentials.

[www.helpessentials.com](http://www.helpessentials.com)

## Table of Contents

---

### **Responsive Layout with Favorites.....3**

Supported Browsers .....3

Where are the Favorites Stored? .....3

European Union cookie law compliance.....3

### **Using the Layout .....4**

Importing the Layout .....4

Customising the layout .....6

Localisation.....6

RoboHelp 2015.....6

RoboHelp 11 .....7

## Responsive Layout with Favorites

---

Thank you for purchasing the Responsive Layout with favorites. With this screen layout allow readers to save topics as favorites. If you encounter any problems using these widgets, don't hesitate to [contact us](#).

### Supported Browsers

---

This widget supports all browsers that support the Theme1 Responsive layout.

### Where are the Favorites Stored?

---

The favorites are stored in the browser of the end user. The script uses HTML5 local storage or, if that is unavailable, cookies. A benefit of this method is that every user has his own favorites. Even when multiple users use the same computer.

Because the favorites are stored in the browser of the end user, you can safely publish a new output while the end user retains their favorites. Only when the end user clears all cookies and local data from their browser, will they lose their favorites.

The only other scenario in which a user loses the stored favorites, is when you place the help on another location. For instance, your help is saved on:

`http://www.example.com/favorites/index.htm`

All the favorites are saved for the help being on this location. Later you place the help on the location:

`http://www.example.com/myhelp/index.htm`

All the favorites will only apply to the old location and not to the new location.

### European Union cookie law compliance

---

If you use this script for end users in the European Union, you may need to inform the user that your help uses cookies. See <http://www.ffw.com/pdf/cookie-consent-tracking-table.pdf> for more information.

## Using the Layout

---

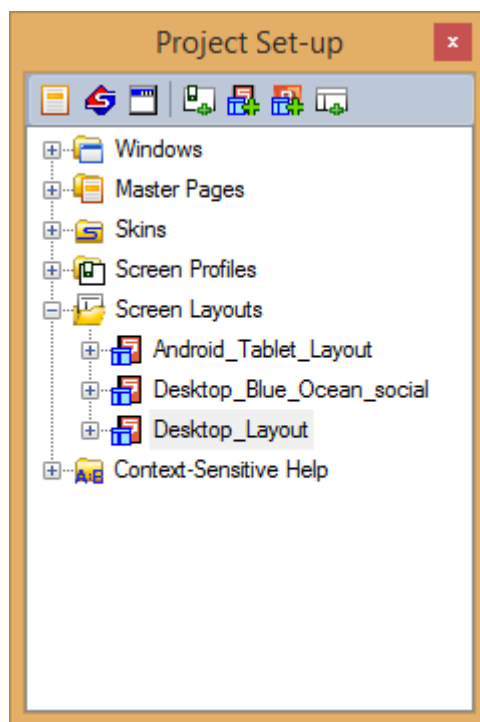
This download contains two layouts. The difference between the two layouts is that the RoboHelp 2015 version allows you to localise the layout from the Screen Layout Editor. You can only use this layout correctly if you are on RoboHelp 2015.

## Importing the Layout

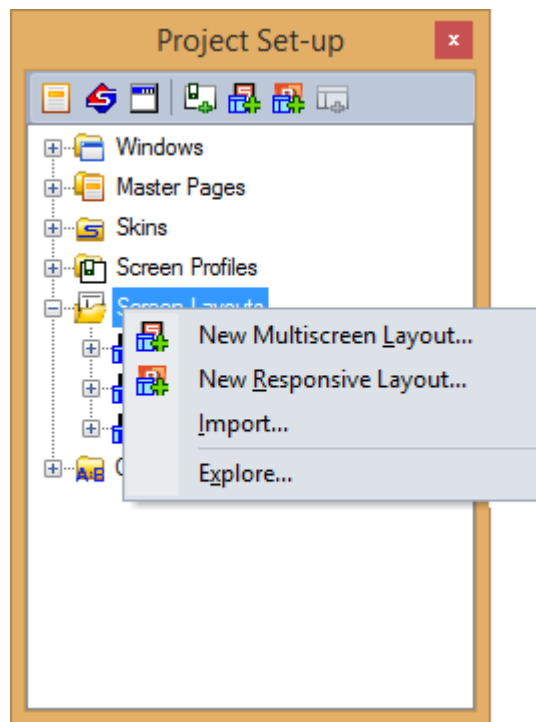
---

To start using the layout, simply import the layout into any RoboHelp 11 or later project:

1. For RoboHelp 11: Choose **View > Pods > Project Set-up**  
For RoboHelp 2015: Choose **Project > Pods > Output setup**



2. Right click Screen Layout and choose **Import...**

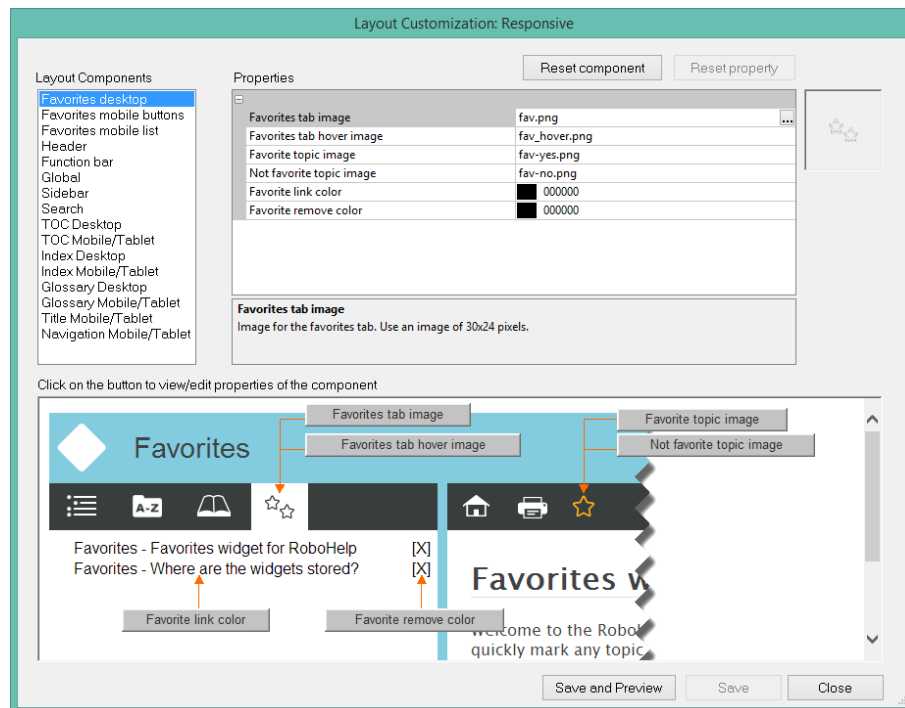


3. With the file picker, select the layout file and click **Open**.

The layout is imported and ready for use.

## Customising the layout

The Theme1 Favorites supports the RoboHelp editor like the regular Theme1 layout. The layout has extra options for the favorites.



## Localisation

### RoboHelp 2015

Localisation is build into the Screen Layout Editor. You can edit the text used in the widget through the Favorites Localisation option.

## RoboHelp 11

---

This widget uses little text. To use a different text or to set a translation, follow the steps as presented in this section. You can find all files in the Project Set-up pod under Screen Layout. Expand the layout Theme1\_standard \_favorites to view the files.

1. Open the file *favorites.js* with a text editor.
2. On line 1- you will see the following text:

```
/* Strings for localisation */  
var favoritesLabel = "Favorites";  
var setAsFavorite = "Set as favorite";  
var unsetAsFavorite = "Unset as favorite";  
var nofavoritesFound = "You have not marked any pages as favorite.";
```

3. Change the value between the quotes with your own text. Note: You cannot use double quotes in your text.
4. Save your changes and generate the output.